

The World Adaptation Science Programme (WASP)

Emerging Research Directions and Core Activities

UNFCCC Research Dialogue
November 24-25, 2020



*making science work
for climate solutions*



WORLD
METEOROLOGICAL
ORGANIZATION



United Nations
Climate Change

ipcc
INTERGOVERNMENTAL PANEL ON
climate change



GREEN
CLIMATE
FUND

UN 
environment
programme

WASP Vision

Ensure that adaptation research gaps are filled,
focusing on policy-relevant scientific research and
prioritizing research needs in vulnerable developing countries

Three major components

Current research gaps

Future research gaps

Policy-relevant guidance



Anand Patwardhan



Johanna Nalau



Cynthia Rosenzweig

Co-Chairs Science Committee



Youssef Nassef

Chair



Minpeng Chen

Co-Chairs Policy and Finance Committee

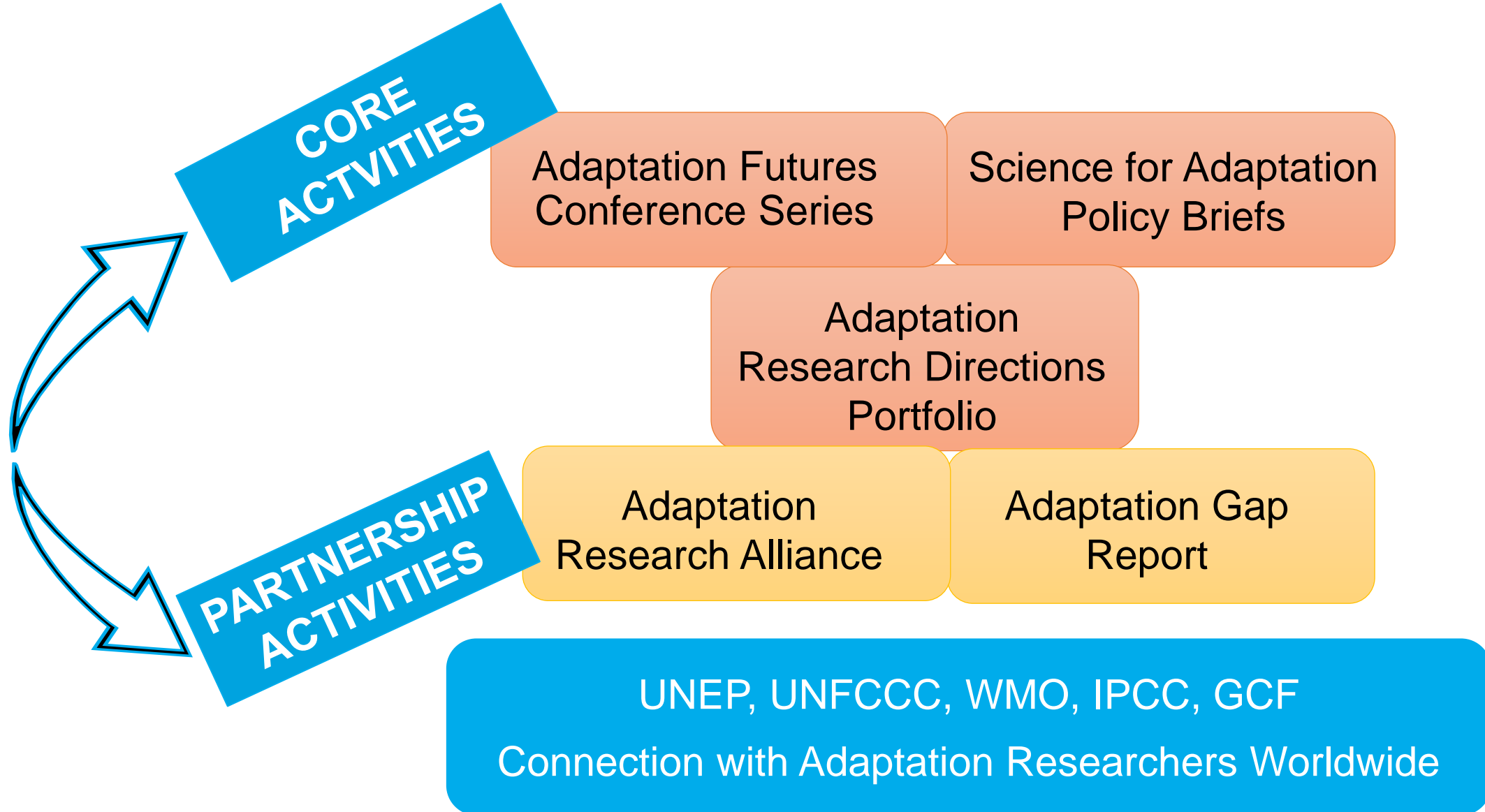


Bruce Currie-Alder

Emerging Context

- New reality of a pandemic world
 - Connecting COVID-19 response and recovery to longer-term adaptation & resilience building
- Climate change impacts increasingly visible
 - Urgency of scaling and accelerating actions for adaptation and resilience
- New technologies reshaping lives, livelihoods and creating new opportunities
 - Building foresight and understanding of new technologies: AI, blockchain, regenerative approaches
- Need to rethink research, action and research – action linkages
 - Focus on action-oriented, user-centered research
 - Learning-by-doing and learning-while-doing
 - Tightening research – implementation loops – intervening at scale, rather than scaling from pilots
- Implications for the role of WASP
 - Respond to emerging context
 - New structure and activities

WASP Core and Partnership Activities



New WASP Science for Adaptation Policy Briefs

1. Adaptation Decision Support Tools and Platforms

Development of successful tools for adaptation requires long-term engagement between developers and practitioners, effective programmes of monitoring and evaluation, and long-term resourcing.

2. Trans-Boundary Climate Risks and Adaptation

Adaptation science should support the policy community to adopt a transboundary lens to better manage the systemic nature of climate risk; adaptation is not necessarily benign – it can redistribute vulnerability and create or magnify risk for others, especially across borders.

3. Adapting to High-End Climate Risks and Adaptation

There are barriers and limits to adaptation, especially at high levels of warming, which may require transformational changes such as large-scale human migration, with knock-on implications for human security.

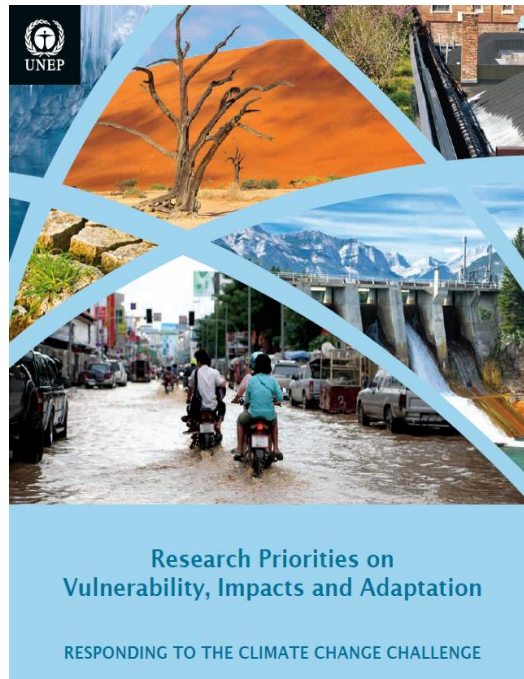
***Learn more at WASP Special Event
November 24, 2020 4-5pm CET***

Adaptation Futures Conference Series

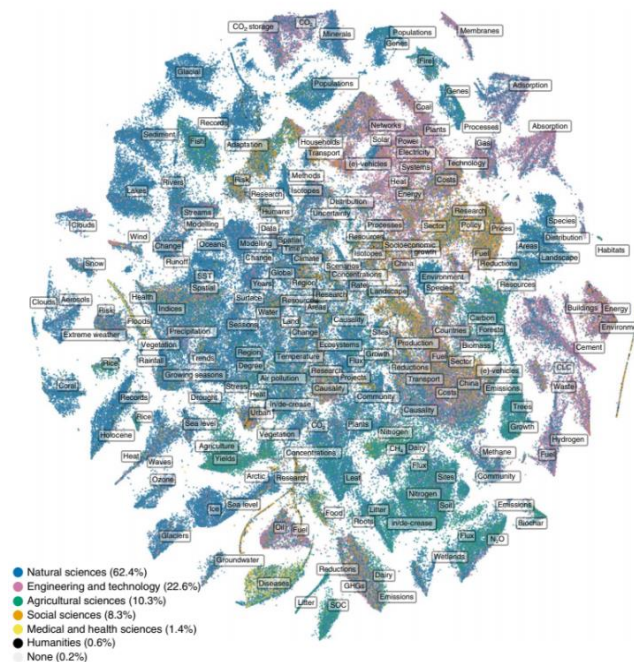
- Biennial conference serves as platform for knowledge sharing and learning across science, policy and practice communities
- Co-organized by WASP and national partner institutions
- Gold Coast – Fortaleza – Arizona – Rotterdam – Cape Town
 - Steadily increasing in scale and scope
 - Cape Town – 1300 participants and 180+ sessions
- Adaptation Futures 2020 planned for April 28 – 30 in New Delhi, hosted by The Energy Research Institute (TERI) and WASP
 - Conference theme of “Knowledge for Action”
 - Conference now postponed to 2021 due to COVID
 - One-day master classes for young researchers
 - On-going engagement continues through Webinars and other modes
- Integrally connected with other WASP activities
 - Outcome document to feed into COP-26

Research Directions and Knowledge Gaps

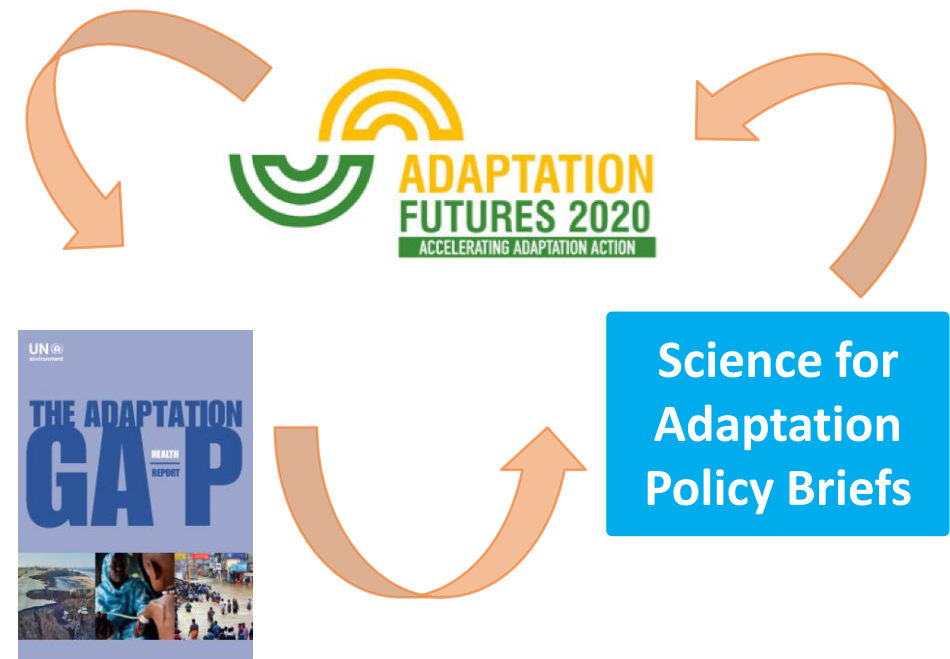
Past Work



Current Status



Next Steps



SOURCE: 10.1038/s41558-019-0684-5

WASP Key Partnership Activities

- Adaptation Research Alliance (ARA): New initiative to scale up investment in action-oriented, user-centered research
 - Creating a coalition across the research and funding communities
 - Bringing together diverse funders to leverage resources and create new and innovative funding platforms
 - Part of the COP-26 Adaptation & Resilience campaign
 - Strong involvement of WASP members
- Adaptation Gap Report (AGR)
 - Tracking status and progress on adaptation at the global level
 - Focus on Planning, Financing and Implementation
 - Rotating deep dive thematic assessment: Nature-based Solutions (NbS) for the 2020 report

Looking Ahead – Call for Collaboration

- Engaging with Parties
- Supporting the UNFCCC process
- Partnering with complementary and synergistic initiatives
- Strengthening WASP contributions to policy and practice
- Building the adaptation science research community